

# SUBMITTAL FOR CHARLOTTE® EZS 800L & 800R STARTER FITTING

Date: \_\_\_\_\_

Job Name: \_\_\_\_\_

Location: \_\_\_\_\_

Engineer: \_\_\_\_\_

Contractor: \_\_\_\_\_

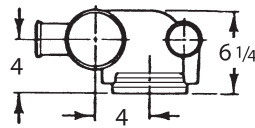
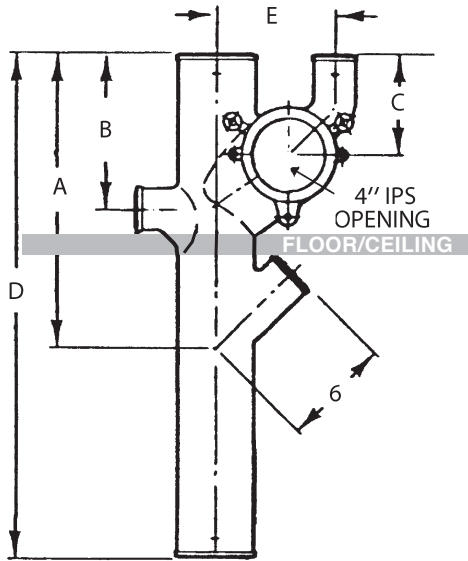


Illustration shows Right Hand

**EZS 800L and 800R**  
Threaded Left or Right  
Starter Fitting with or  
without No-Hub Inlets

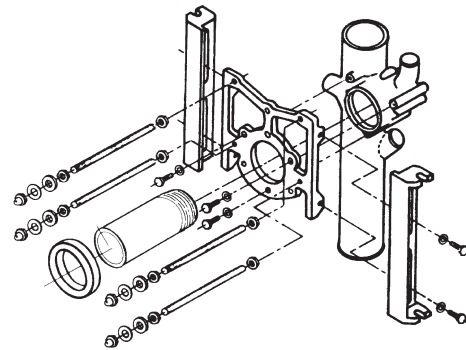
Part No.	Size	A	B	C	D	E	Weight
EZS 800L	4x28	16	0	5 1/2	28	6 1/2	35.4
EZS 800L	4x28	16	8 1/2	5 1/2	28	6 1/2	36.3
EZS 800R	4x28	16	0	5 1/2	28	6 1/2	35.6
EZS 800R	4x28	16	8 1/2	5 1/2	28	6 1/2	35.3

**ENGINEERING SPECIFICATION:**  
Part NO. EZS 800L and EZS 800R Cast Iron Threaded Starter Fitting with or without 2" No-Hub Inlets; Designed for use above the floor with back-outlet water closets. Manufactured in accordance with CISPI 301.

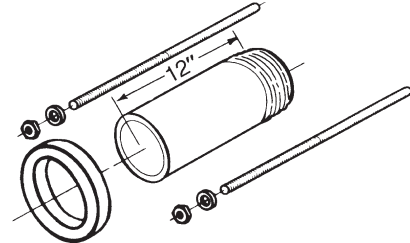
**FOR WALL-HUNG, BACK-OUTLET APPLICATIONS:** Contractor shall provide EZS 800L or EZS 800R fitting with EZS 22 Support Frame and EZS 24 Trim Package. Installation shall be for applications not exceeding 500 lbs.

**FOR FLOOR-MOUNTED, BACK-OUTLET APPLICATIONS:** Contractor shall provide EZS 800L or EZS 800R fitting with EZS 23 Trim Package.

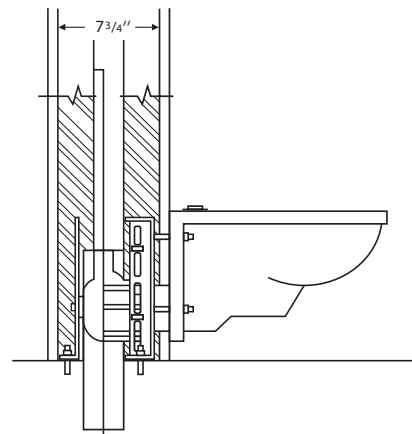
**EZS 22 Support Frame and EZS 24 Trim Package for Wall-Hung, Back-Outlet Water Closet Installations Shown**



**EZS 23 Trim Package for Floor-Mounted, Back-Outlet Water Closet Installations Shown**



**Minimum Space Requirements for EZS 700 and EZS 800 Left and Right Starter Fittings**



For more information, call us at 1-800-438-6091 or log on to [www.charlottepipe.com](http://www.charlottepipe.com).

Charlotte is a registered trademark of Charlotte Pipe and Foundry Company.